



CONNECT. CONTROL. COLLABORATE.



TABLE OF CONTENTS

Discover how CTCI Technology empowers businesses with innovative IT solutions.

Easily navigate through our key sections.

03 Introduction

- 03 About Us
- 05 Leadership Team

09 Services

- 09 Audio Visual
- 11 IT Infrastructure
- 15 DAS / Cellular Enhancement
- 16 Security
- 19 OnCommand

29 Project Experience

- 29 Trusted Partners
- 30 Project Profiles

06 Method of Operation

- 06 Proven Process
- 07 Core Values
- 08 Unique Identifiers

22 Industries

- 23 B.A.C.E.S
- 24 Corporate
- 25 Healthcare
- 26 Education
- 27 Government
- 28 Government Channels

33 Partner Manufacturers

- 33 Product Alignment



ABOUT US

CTCL is a technology integrator that engineers, implements & services advanced technology systems. Our core competencies include immersive Audio Visual, Electronic Security Systems, Structured Cabling, PoE Lighting and Sound Masking solutions.

For over 40 years, we have delivered exceptional technology and unparalleled customer service to businesses and organizations in the New York Metropolitan area, as well as regional, national and international markets.



Integrated Technology Solutions

As a single-source supplier of structured cabling, audio-visual unified collaboration and security systems, we provide a competitive edge for our customers. With a staff of experienced professionals who pride themselves on learning, we ensure the highest levels of customer satisfaction with our comprehensive suite of in-house design, build, installation, management, maintenance and inspection capabilities.

CTCI represents the leading technology manufacturers in the industry-engineering the system structures and integrating these cutting-edge technologies into user-friendly applications for our end-user clients.



Innovation & Lasting Partnerships

Recognized in the tech industry for our Commitment to innovation, integrity and customer responsiveness, CTCI Acknowledges the importance of developing long-term relationships with our customers as we anticipate and address their critical technology challenges. Our integrated systems are the arteries through which information flows within the organizational network: improving productivity, enriching communications, and increasing profitability.

LEADERSHIP TEAM



**Aaron
Hamai**

Director of Engineering



**Jordan
Perretz**

Director of Procurement & Logistics



**Kevin
Pelepako**

Director of Project Management



**Pat
Minneci**

Director of Estimating



**John
Morel**

IT / Cabling Operations Manager



**Pete
Townes**

Director of Security Operations



**Thomas
McCaugherty**

AE Leadership Rep



**Tom
Wrobel**

AV Operations Manager

EXECUTIVE TEAM



**Michael
McCaugherty**

President



**James
Sprayberry**

Executive Vice President



**Michael
Rood**

Controller



**Rob
Thatcher**

Vice President of Security



**Mike
Martone**

Vice President of Sales

PROVEN PROCESS



Discovery

- Understand your organization
- Explain our process
- How we'll optimize your tech
- Establish performance & budget requirements



Engineer

- CAD & System Drawings
- Flow & Signal Diagrams
- Design System that meets schedule & budget



Build

- Mobilize
- Build Infrastructure
- Configure Systems & Software
- Commission & QC



Support

- Provide Systems Training
- Help Desk
- Extended Support Options
- Guaranteed

Pick up the Phone

COMMUNICATE TRANSPARENTLY

We are open, candid and direct. We speak up with constructive ideas, feedback & concerns that are timely, specific and relevant.

One CTCI Team

COLLABORATION

We work together, share ideas, knowledge & encouragement freely. We build and collaborate to win and grow as a team, giving all to bring out the best, in others.

Pay Attention to Detail

NO BROWN M&Ms

We are precise thorough and conscientious so that we produce our very best work.



Humanize the Process

CARE

We care about the company, each other, our customers, their experience and the work we do.

Always Growing

LEARN

We read, learn, and embrace personal growth. We accept change as essential and continually sharpen our skills, knowledge, capabilities and embrace personal growth. and the work we do.

Roll Up Your Sleeves

EXECUTE

We have a "Can Do" attitude - accepting responsibility, taking ownership, demonstrating initiative, adapting to change, and living up to our commitments.

UNIQUE IDENTIFIERS

At **FOCUS**, our mission is centered on building connections through innovative solutions. **Our secret sauce?** A team of highly skilled and dedicated employees who share our values and are committed to delivering quality work.

We engineer our systems with precision and guarantee peak performance. And we don't stop there. Our team remains hands-on, both on site and remotely, to ensure your investment is reliable and productive for years to come.



Self-Performed

- All work is performed in-house
- Utilize our highly trained & certified crews
- Ability to easily adjust staffing levels based on project schedule

On-Site Fabrication Lab

- CTCI is equipped with a cutting-edge Technology Lab that enables faster completion of jobs
- Fabrication for technology systems can be completed in-house, reducing time spent offsite

Professionally Managed

- Committed project management staff and On-site field technicians
- Customer-facing PM software with real-time updates
- Help desk support provided
- Service management & dispatch
- Dedicated CSM appointed

Engineered Systems

All Programing, Drawings & CAD performed in-house offers:

- Functionality & flow diagramming
- Maximum customization & immediate project design changes
- Reduced additional engineering expenses

AUDIO VISUAL SOLUTIONS

Transform your workspace with CTCI's cutting-edge Audio-Visual technology. Our comprehensive suite of system design, customer support and enterprise software solutions give you effortless meeting room management from any location - enabling memorable conferencing experiences that are a breeze to schedule and control.

biamp.

LogiSon[®]
ACOUSTIC NETWORK

poly

CHIEF

CRESTRON

SMART
Technologies

SAMSUNG

PLANAR

BrightSign

cisco

Extron

BARCO

ClearOne

DA-LITE

Microsoft Teams

zoom



Our networked systems enable full enterprise collaboration, remote support, and firmware updates. They offer customizable solutions to meet the needs of various collaboration spaces. With flexible capabilities, users can instantly share from any device, wired or wireless, with no prior training required.



Digital Signage

Eye-catching visuals guarantee maximum impact! Video Walls are perfect for directories, corporate messaging or grabbing attention!



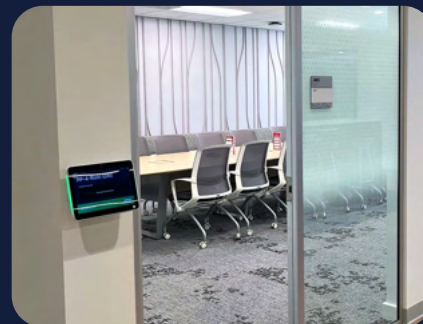
Conference Rooms

Meeting spaces are for more than just collaboration. With leading edge video conferencing technology and software like Zoom or Teams ready to go, you'll have your audience connected - no matter where they are.



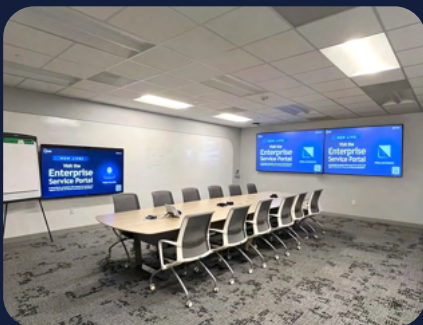
Open Meeting Space

Open floor plans are perfect for today's hybrid employees. These open meeting areas boost morale and communication between teams.



Room Scheduling

Maximize the productivity of your team by eliminating double booking or overbooking. Plus, it encourages employees to become more mindful and purposeful in how they use the office.



Training Rooms

Transform your training room into an inviting space with quality sound systems and equipment to ensure presentations come alive and engage both virtual and on-site participants.



Acoustic Solutions

In today's modern open-offices, acoustics can be an obstacle to productivity. Sound masking and acoustic paneling help create a productive workspace while protecting sensitive conversations.

IT INFRASTRUCTURE

We start every project with a personalized needs assessment, allowing us to design, build, and service IT systems tailored to your business's unique infrastructure needs. By understanding your specific challenges and goals, we create solutions that enhance efficiency, security, and collaboration across your organization.



Our custom-built IT solutions ensure optimal functionality, helping you protect data with cutting-edge security, streamline digital collaboration, and stay connected with clients.



IT INFRASTRUCTURE

STRUCTURED CABLING

CTCI specializes in infrastructure support for Surveillance, Card access, Audio Visual systems and low voltage lighting.

We provide multi-system cabling within the commercial sector and are involved in a range of IT fit-outs, from service calls to expansive projects which span across multiple buildings and campuses.



6 Pillar Sub-Systems

Cabling is a robust critical infrastructure that supports operations now and in the future.

Equipment Rooms

Entrance Facilities

Telecommunications Rooms

Horizontal Cabling

Backbone Cabling

Work-Area Components



IT INFRASTRUCTURE

DATA CENTERS

The data center is the core component off the enterprise infrastructure as it provides network backup, recovery, cloud storage and processing power.

Through cutting-edge UHD structured cabling, CTCI helps businesses reduce operational costs and installation time.



Fiber Solutions

Our pre-terminated high strand fiber trunks, MPO/MTP connectors and large capacity fiber enclosures are part of the solution for your business continuity as they minimize sources of failure while providing longevity to your infrastructure.

Moreover, these solutions have built in modularity allowing them to be easily upgraded or scaled when needed.



IT INFRASTRUCTURE

WAN & CAMPUS NETWORKS

CTCI designs, installs, services, and maintains Campus Area Networks including university campuses, pharmaceutical campuses and corporate buildings, often providing the transmission media (optical fiber, copper plant, coaxial, etc...) that connects the networks.



Expert Installers

CTCI is trained and equipped to handle a variety of outside plant installations, including aerial, underground, blown, and direct burial.

In addition, CTCI services and maintains the existing Wide Area Network cabling for Public school districts throughout the state of NJ as well as municipal WANs. In many cases CTCI has also designed and engineered the support infrastructure including underground boring and trenching, conduit, pole erection and aerial support.

ENHANCE CELL SIGNAL

Modern energy-efficient buildings often block even the strongest cell signals due to materials like concrete, brick, insulation, and coated glass.

Our Cellular Enhancement systems capture and amplify external signals to ensure strong, reliable indoor coverage. A Distributed Antenna System further boosts voice and data connectivity by distributing signals through multiple antennas for seamless communication.

Function



Our system is designed to provide seamless connectivity and reliable performance across multiple buildings.

Support



Engineered to support thousands of devices simultaneously, ensuring seamless connectivity and optimal performance.

5G Ready



5G-ready for high-speed connectivity, future-proof performance, and seamless compatibility with all major carriers.

SECURITY SOLUTIONS

CTCI understands that every organization is unique and requires a security system tailored to its specific needs, space, and budget. Our experienced design team creates customized solutions to ensure optimal protection for your organization. Even after installation, we remain committed to your success by offering ongoing support, including threat analysis, preventive maintenance plans, and service agreements. With CTCI, you can trust that your security system will continue to operate smoothly and effectively for years to come.



Software House



exacqVision

i-PRO



Genetec



CTCI is a provider of modern security solutions for the ever-evolving workplace environment. We offer both on-premise and cloud-based security solutions to meet your needs.



SECURITY



ACCESS CONTROL

Modernize your security with CTCI's advanced technology, featuring card readers, electronic locks, exit devices, and local notification systems.

Easily pair with your smartphone to replace outdated plastic cards and enhance convenience, control, and protection for your space. Let us help you take security into the 21st century.



IP VIDEO SURVEILLANCE

Enhance security with CTCI's unified solution, utilizing advanced IP camera technology to analyze crowd behavior. Provides heat mapping and uses advanced analytics to make video searches simply and fast.

Experience holistic protection and full potential with personalized equipment and installation, exclusively by CTCI.



TURNSTILES

Enhance access control with high-tech turnstiles designed for security and convenience.

CTCI provides modern hardware that supports badges, barcodes, and advanced biometric scanning, including fingerprints and facial recognition.

Use your smartphone as a credential, ensuring seamless entry.



LICENSE PLATE RECOGNITION

LPR can transform your vehicle into an access key with specialized cameras that automatically grant entry based on your license plate, allowing you to drive through without rolling down your window or speaking a word.

Additionally, LPR can alert security staff when vehicles on a “hotlist” are detected, enhancing safety and security for all.



CLOUD BASED SYSTEMS

Unlock the power of SaaS (Software as a Service) with cloud-based systems that eliminate the need for on premise servers.

Enjoy effortless server management and seamless integration for Access Control, Video, and Visitor Management with CTCI's Cloud solutions, saving you time, money, and effort.



ONCOMMAND SUPPORT

Commercial Technology, powered by CTCI, provides technology service contracts designed to maximize your organization's productivity with innovative and tailored solutions - plus reduce operational costs through flexible billing.

Our service and support team make sure operations run smoothly while freeing up your team for mission-critical tasks & advancing business objectives.



Support Solutions

Help desk support

On-site support coverage

No additional cost per visit

System training & reorientation
(on new equipment)

Semi-annual review with Account Manager

Firmware / software updates

No cost replacement on supported
equipment



Predictive Monitoring and Maintenance

As part of the OnCommand suite, CTCI offers a Predictive Monitoring Program to provide proactive, data-driven insights for managing and maintaining AV and security technology systems.

This program leverages remote monitoring, analytics, and predictive maintenance to minimize downtime, enhance system performance, and streamline operational efficiency.

PREDICTIVE MONITORING & MAINTENANCE

Automated Issue Resolution & Support

- CTCI maintains an internal unified dashboard that provides insights across both platforms.
- Automated remediation scripts and workflows to fix common issues before they escalate.
- AI-powered recommendations for firmware updates, configuration changes, and proactive replacements.

Remote Monitoring & Management

- Real-time monitoring of AV and security devices.
- Alerts for performance degradation, potential failures, and unauthorized access.
- Network topology mapping for complete visibility into connected devices.
- Remote access for troubleshooting and configuration without on-site visits.

Business Intelligence & Reporting

- Custom dashboards to visualize device health, performance trends, and usage analytics.
- Periodic reports with actionable insights for service-level agreements (SLAs) and operational efficiency.
- Predictive analytics for capacity planning and budgeting.

Predictive Maintenance & Lifecycle Management

- Device health and lifecycle analytics to predict failures before they happen.
- Automated alerts based on historical performance and AI-driven trend analysis.
- Asset management for tracking device status, warranties, and service contracts.
- Integration with CTCI's ticketing and service platforms for automated workflows.

Enhanced Security & Compliance

- Continuous security monitoring to detect vulnerabilities and unauthorized access.
- Compliance tracking for AV and security systems to ensure regulatory standards are met.
- Encrypted remote access with audit logs for accountability.

Use Cases in Commercial AV & Security Systems

Proactive System Maintenance

Detecting early signs of device failure, reducing emergency service calls.

Improved Customer Support

Faster troubleshooting via remote access, reducing downtime.

Cost Optimization

Extending device lifespan, reducing unnecessary replacements.

Operational Efficiency

Automating asset tracking, firmware updates, and security patches.



Contact our Service Department today and elevate your business with tailored contracts, designed to maximize ROI and unleash peak performance. Embrace the power of customization for exceptional efficiency!



24/7 Emergency Support Line:

973-852-3380

Email us:

service@ctcitechnology.com

Website:

ctcitechnology.com



Scan for Tech Support

INDUSTRIES

At CTCI, we pride ourselves on being versatile and adaptable to the needs of different industries. Our team is equipped with the experience and expertise to create innovative technology solutions that cater to the unique needs of businesses within the B.A.C.E.S, Corporate, Healthcare, Education, and Government sectors.

We understand the unique challenges of every industry and leverage our expertise to deliver customized solutions that drive success. Whether optimizing healthcare workflows or enhancing classroom learning, we are dedicated to empowering organizations across all sectors. Partner with us for seamless technology implementation and experience exceptional results.

B.A.C.E.S



Corporate



Healthcare



Education



Government





INDUSTRIES

B.A.C.E.S

At CTCI, we understand that delivering high-quality results to your clients is your top priority. That's why we take great pride in offering premier construction technology integration services that guarantee reliability, trust, and incredible results.

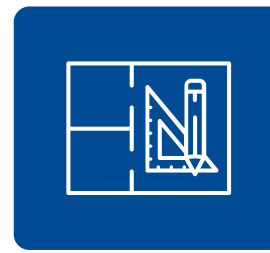
We take a wire 1st approach to system engineering, starting with a strong foundation of trusted infrastructure that ensures your systems are built to last. Our expert team then works with you to create custom systems that are tailored to meet your specific needs, combining cutting-edge technology with unparalleled attention to detail.



Technology Integration Services for:



Builders



Architects



Consultants



Engineers



Subcontractors





INDUSTRIES

CORPORATE

Stay ahead in today's fast-paced business world with CTCI's cutting-edge IT, AV, and security solutions.

We provide customized, integrated technology services designed to meet your unique needs, helping you achieve your goals and drive industry success.

Let us build a strong technology foundation in IT, AV, or security that supports your growth, innovation, and long-term success.



Protect Your Assets

Secure your business and employees with cutting-edge security solutions from CTCI. Our integrated systems provide access control and video surveillance to prevent intrusions and capture evidence. With a range of customizable options, we can address any unique security needs for your business facilities. Trust us to keep your assets safe and secure.

Collaborate from Anywhere

Whether your team is remote or follows a hybrid work model, collaboration is key. That's why we offer integrated IT and AV technology solutions that can support your team's digital workspace needs. From huddle rooms to Zoom Rooms, we have everything your team needs to conduct productive meetings and promote a positive team atmosphere. Let us help you facilitate corporate Unified Collaboration.



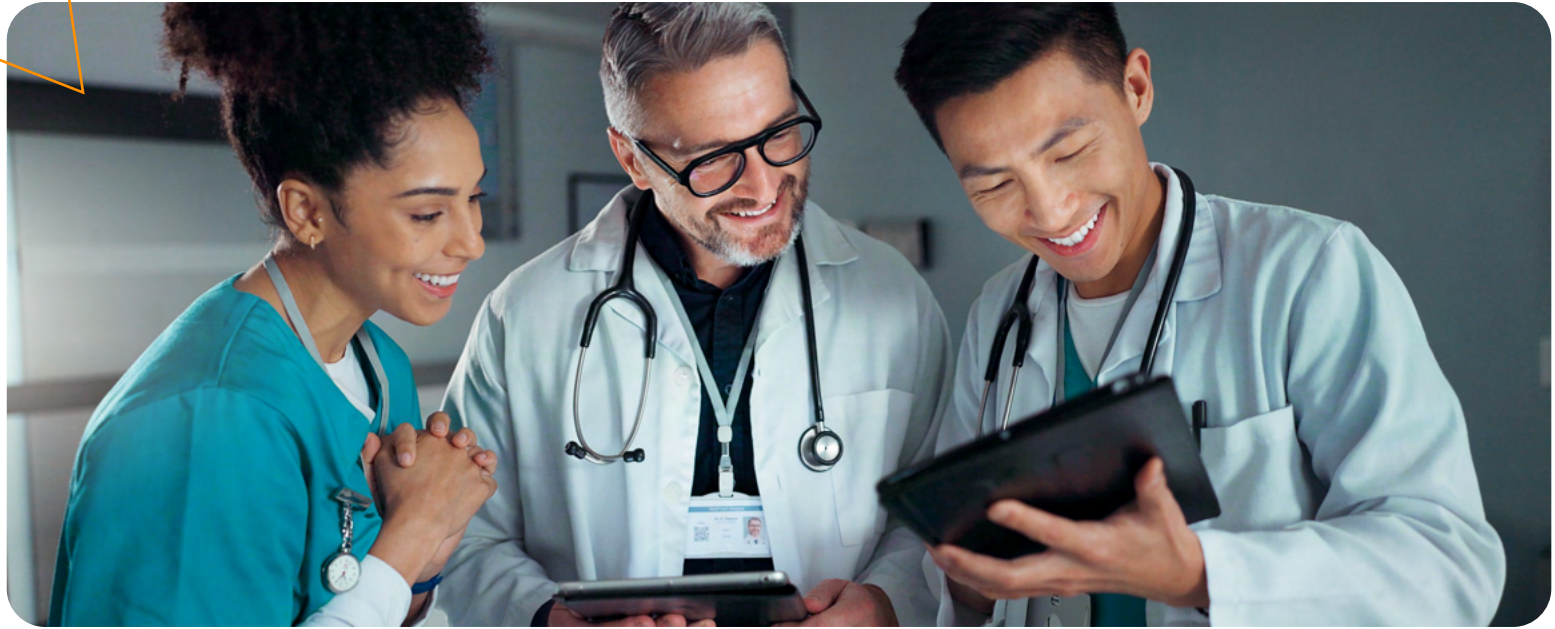
INDUSTRIES

HEALTHCARE

Our cutting-edge IT, AV, and Security Solutions empower healthcare providers to deliver exceptional patient care in secure environments.

We design and integrate innovative technology that supports positive patient outcomes and ensures HIPAA-compliant data management.

Trust us to provide world-class solutions that enhance your practice's performance and elevate your patients' experience.



Enhance Patient Care

CTCI empowers healthcare providers with advanced technology solutions, including digital signage, intercom systems, and PoE lighting, to enhance both patient comfort and staff efficiency. By integrating cutting-edge IT and AV solutions, we streamline communication and accessibility, making medical services more convenient and efficient than ever.

Safe Environment

Healthcare requires the highest levels of security and privacy to protect patients and staff. CTCI offers reliable solutions like controlled access doors, security cameras, and sound masking to keep confidential information secure. Our expert engineers can create a comprehensive security suite to ensure your facility remains safe and secure for everyone.

EDUCATION

Technology is revolutionizing education by becoming an integral part of everyday learning.

It creates a safer environment while accelerating learning through interactive and engaging experiences.

A tech-savvy approach fosters collaboration, supports individual learning styles, and creates an immersive educational experience. By embracing technology, we can drive innovation, creativity, and equip future leaders with essential skills for success.



Audio Visual Solutions

Interactive Displays

Laser Projectors

Classroom Audio Solutions

Digital Signage

Virtual & Hybrid Solutions

Security for Education

Watch Over Your School

Prevent Incidents

Mitigate Damages

Lock Down Entrances

Manage Entry Points



INDUSTRIES

GOVERNMENT

CTCI goes beyond IT and AV, delivering cutting-edge tech for government agencies. Enhance cellular coverage, cut costs with PoE lighting and other PropTech solutions, and stay supported with managed services—ensuring your agency is ready for any challenge.

We provide customized, integrated technology services designed to meet your unique needs, helping you achieve your goals and drive industry success.

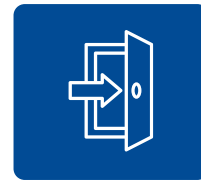


IT, AV & Security Technology for Government Agencies

Safeguard your agency's valuable assets, interests, and people with CTCI's advanced Security technology solutions. Pairing video surveillance, access control entrances, emergency points, and alarm systems yield optimal results when integrated together. Our top-notch integration services strengthen each security solution, delivering a powerful and comprehensive security system.



Access Control



Emergency Points



Alarm Systems



Video Security



PropTech



INDUSTRIES

GOVERNMENT PURCHASING PROGRAM

At CTCI, we're dedicated to providing government agencies in New Jersey with cost-effective purchasing channels.

As part of State, Government, and County Purchasing Cooperatives, we provide cost-effective services for municipalities, schools, and universities. The bid process can be demanding, which is why we're proud to have been awarded contracts that meet your specific requirements. Let us help you stay within your budget and streamline the purchasing process.



The State of New Jersey Schools Development Authority

CTCI has been approved by the State of New Jersey Schools Development Authority and Division of Property Management and Construction as a Prequalified Contractor for the following Services:



Audio Visual



Communication Wiring



Fiber Optics



Security

GOVERNMENT CONTRACTS

Bergen County Coop

Contract: **BC-BID-24-38**
Title: Computer Equipment
& Peripherals

Hunterdon County - ESC

Contract: **HECSC-CAT-20-09**
Title: Physical Security Products

Mercer County

Contract: **CK09MERCER2021-18**
Title: Telecom Cable Installation
& Repair

Somerset County - ESC

Contract: **CC-0056-20**
Title: Open End, Data Cable
Installation & Related Services

Morris County - ESC

Contract: **EDS Bid #10437**
Title: MSRP Tech, AV, Computer,
Interactive Whiteboards

OMNIA Partners (Public)

Contract: **R200803**
Title: Cyber Security Solutions
(Incl. Products & Services)

TRUSTED PARTNERS

For nearly 40 years, we've been committed to exceeding client expectations by delivering customized solutions that align with their unique needs and resources. No matter the size or complexity of your project, you can rely on our expertise and dedication to achieve outstanding results. Let us bring your vision to life with a team that prioritizes your success every step of the way.





VIRGINIA DARE

Virginia Dare, a century-old leader in food and beverage solutions, has unveiled its new headquarters in Carteret, NJ. CTCL created a high-tech facility designed for flexibility and future growth, enhancing efficiency and driving innovation.

The goal was to build a cutting-edge space that fosters collaboration, enhances product development, and streamlines operations. To achieve this, the headquarters required advanced technology to support diverse meeting formats.

Our Solutions

Huddle & Small Rooms – 55" displays with integrated tech.

Medium Rooms – 75" displays with enhanced A/V.

Large Conference Room – Dual 85" displays, conferencing, superior sound.

Customer Center – 2x2 video wall, PTZ cameras for flexible A/V.

Break Room – 55" display for digital signage.

Room Schedulers – Integrated with calendaring services.





WISS HEADQUARTERS

CTCI collaborated with Wiss, an accounting firm, and design firm Studio 1200 to furnish and install a cutting-edge LED video wall in the Wiss Headquarters lobby. This project transformed the space into a visually dynamic environment that enhances brand presence and visitor engagement.

Our Solutions

Display Installation – 9.9' x 11.1' Planar video wall with 1.5 MGP resolution.

Content Delivery – Integrated cloud-based signage player for dynamic branding.

Training – Provided training for managing content on the signage player.

Design Collaboration with Architects

Space for passive airflow – Ensures optimal performance.

Precision sizing – Align with custom millwork.

Strategic placement – Harmony with glass railings and architectural design.

PLANAR

BrightSign®



Roku

ROKU

CTCI installed data cabling across 8 floors in ROKU's new NYC headquarters, providing AV technology. The setup included digital signage and 118 Cisco conference rooms. Sound masking tech for added comfort was also installed.

Audio Visual

- Install digital signage & own supplied TVs
- Varying conference & meeting room sizes
- Install & program of Cisco room kits
- Supply & install iPad room schedulers & sound masking system
- Training room w/ multi-cam recording & ceiling speakers
- Custom rack design

IT Infrastructure

- 450,000 ft. of Cat 6 + 2,500 ft. of termination pts
- 36 strand fiber backbone
- Build-out of MDF & IDF rooms
- 30 network cabinets & associated ladder racks

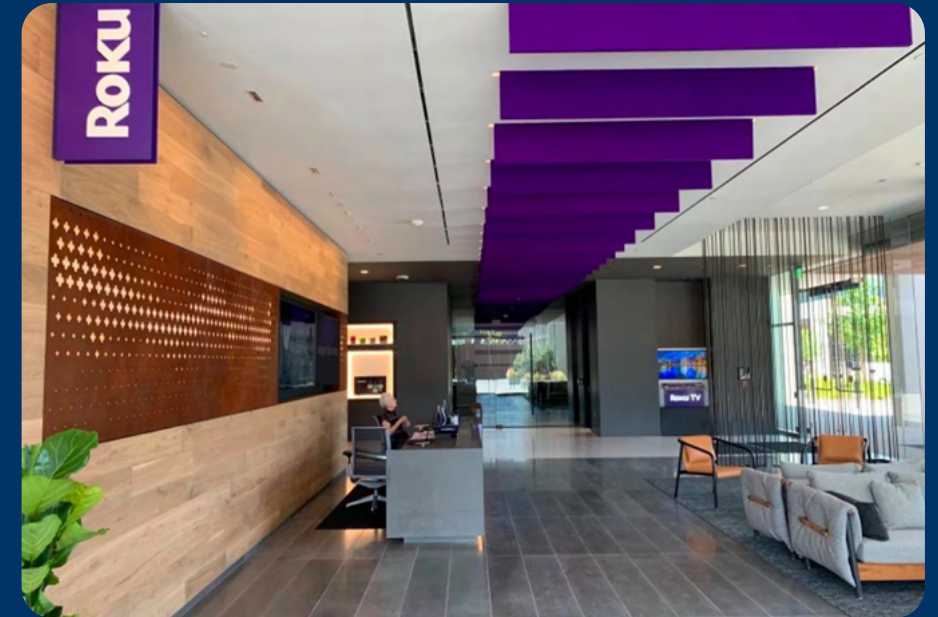
biamp.

LENCORE

ATLONA

CISCO

cambridge
SOUND MANAGEMENT



PRODUCT ALIGNMENT



CONTACT

973.594.9500

info@ctcitechnology.com

ADDRESS

152 Huron Ave
Clifton, NJ 07013

WEBSITE

ctcitechnology.com

Scan to visit
our website

